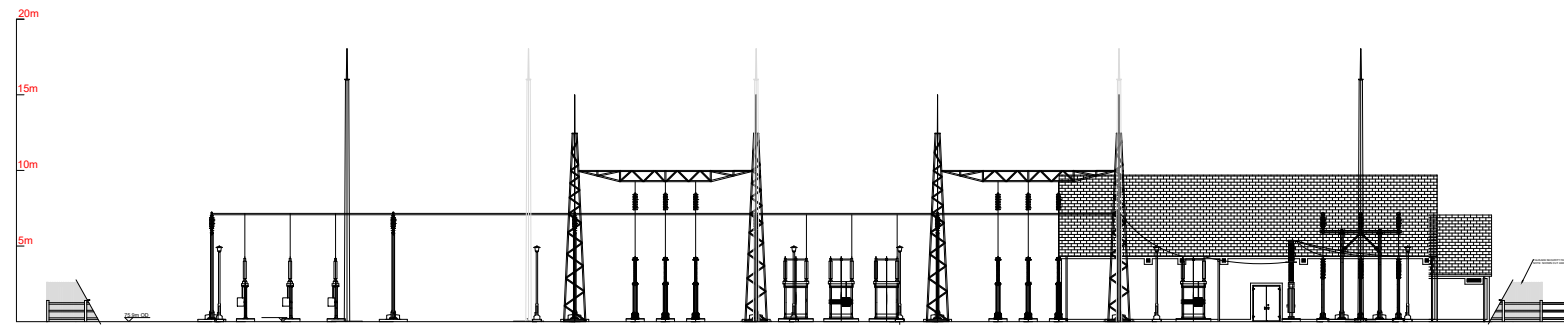
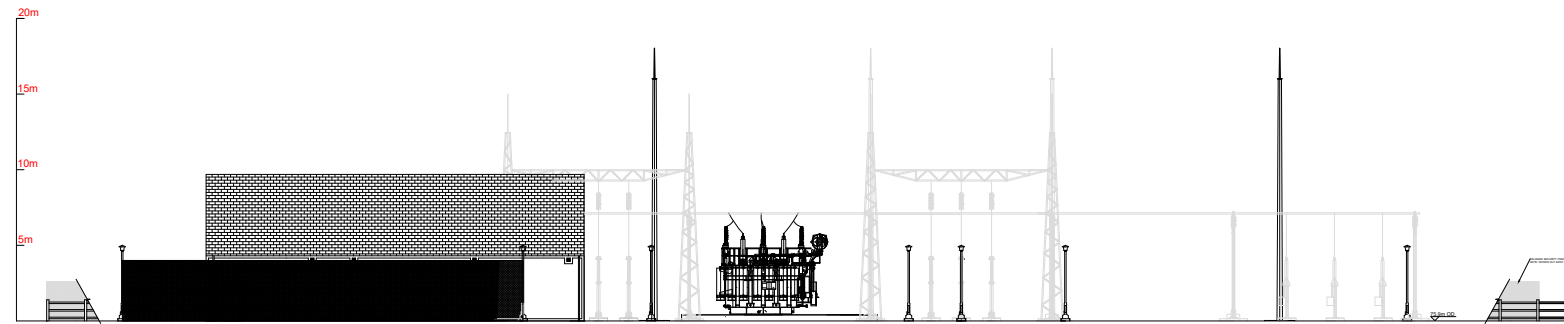


**NOTES:**

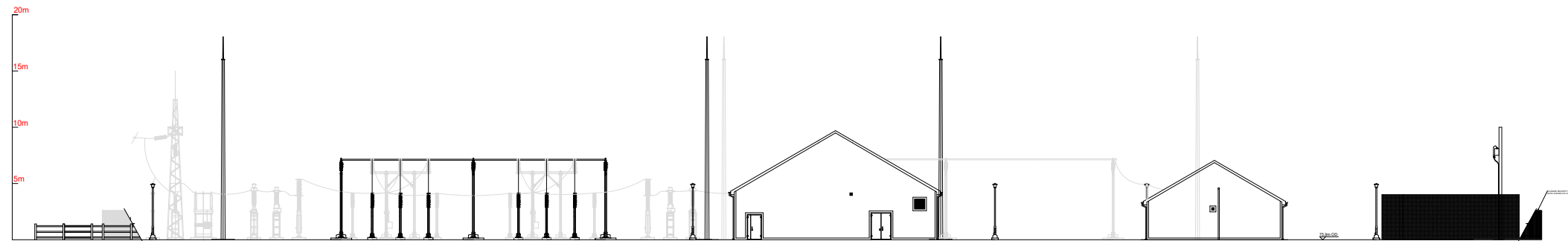
1. ALL DIMENSIONS NOTED ARE IN MM
2. DRAWING IS FOR PLANNING PURPOSES ONLY
3. POSITION AND QUANTITIES OF LIGHTNING MASTS & LAMP POSTS ARE INDICATIVE AND SUBJECT TO CHANGE DURING DETAILED DESIGN PHASE
4. POSITION OF 110 KV AIS EQUIPMENT IS SUBJECT TO CHANGE DURING DETAILED DESIGN PHASE
5. RURAL SUPPLY POSITION INDICATIVE. FINAL POSITIONING TO BE AGREED WITH ESB NETWORKS.
6. USE OF LINE TRAPS FOR OVERHEAD LINE CONNECTION IS TO BE CONFIRMED BY SYSTEM OPERATOR.



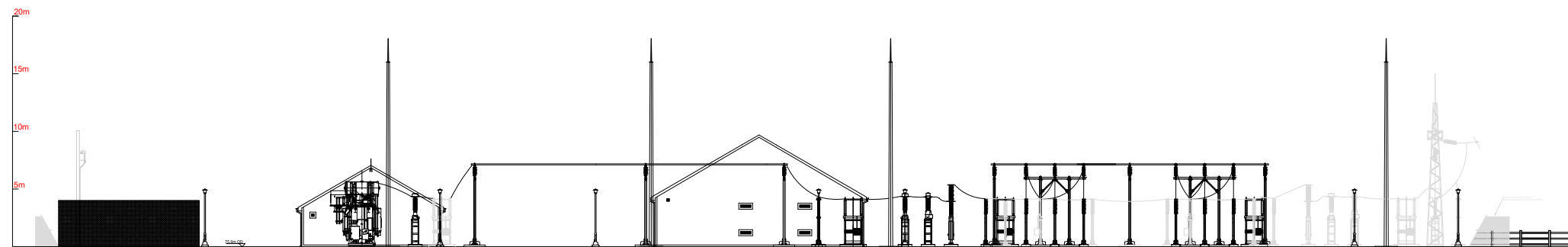
SECTION VIEW A - A



SECTION VIEW B - B



SECTION VIEW C - C



SECTION VIEW D - D

DRAWING TITLE: <b>Substation Sections</b>	
PROJECT TITLE: <b>Ballivor Wind Farm, Co. Meath &amp; Co. Westmeath</b>	
DRAWING BY: <b>BS</b>	CHECKED BY: <b>JMcD</b>
PROJECT No.: <b>191137</b>	DRAWING No.: <b>191137 - 72</b>
SCALE: <b>1:500 @ A3</b>	DATE: <b>27.03.2023</b>